



A 3B SCIENTIFIC COMPANY



3B Scientific



VSI PRODUCT CATALOG

3B Scientific Group of Companies

Find all products online at 3bscientific.com

About VSI

Veterinary Simulator Industries was incorporated in 2009, specializing in creating top-tier animal simulators for use in veterinary educational settings. In 2024, VSI joined the 3B Scientific Group, becoming part of a global network dedicated to advancing medical and veterinary education.

Focusing on innovation, quality, and service, VSI simulators are now utilized in 55 countries and more than 160 leading educational institutions worldwide.

Developed through close collaboration between professional designers/fabricators and veterinary educators, these simulators are highly realistic, functional, and built to withstand the demands of intensive training.

By reducing the need for live teaching animals, VSI simulators help institutions save time and resources while supporting modern testing standards.

Students can practice procedures in a controlled environment, building confidence and competence before working with live animals – making the learning experience safer and more positive for both students and animals.



Enhancing Animal Welfare Through Simulation

Simulation is one of the most effective and risk-free ways to prepare veterinary students for the complexities of professional practice. Regulatory bodies as well as educational institutions are creating guidelines for performing invasive procedures on healthy live animals in teaching.

These new restrictions could potentially limit training time and access to live animals for students. Veterinary Simulator Industries is proud to manufacture veterinary simulators that provide ethical training alternatives that meet with the changing guidelines. VSI is continually developing new simulation products and constantly refining existing models based on feedback from our customers. We are proud to be a Canadian company.



► AMERICAN VETERINARY MEDICAL ASSOCIATION (AVMA)

Use of animals in research, testing, and education.

“The AVMA recognizes that humane care of animals used in research, testing, and education is an integral part of those activities. In keeping with these values, the AVMA endorses the principles embodied in the “3 Rs” tenet of Russell and Burch (1959). These principles are: **replacement of animals with non-animal methods wherever feasible**; reduction of the number of animals consistent with sound experimental design; and refinement of experimental methods to eliminate or reduce animal pain and distress.”

<https://www.avma.org/resources-tools/avma-policies/use-animals-research-testing-and-education>



► AMERICAN ASSOCIATION OF VETERINARY MEDICAL COLLEGES (AAVMC)

October 2022

“Teach tasks and procedures using a clinical skills model or simulation whenever one is available and effective to complement or precede live animal practice, depending on pedagogical circumstance”

<https://www.aavmc.org/wp-content/uploads/2023/05/AAVMC-Guidelines-AnimalUse.pdf>



► EUROPEAN UNION (EU)

DIRECTIVE 2010/63/EU OF THE EUROPEAN PARLIAMENT AND OF THE COUNCIL of 22 September 2010 on the protection of animals used for scientific purposes

“Animals have an intrinsic value which must be respected. There are also the ethical concerns of the general public as regards the use of animals in procedures. Therefore, animals should always be treated as sentient creatures and their use in procedures should be restricted to areas which may ultimately benefit human or animal health, or the environment. The use of animals for scientific or educational purposes should therefore only be considered where a non-animal alternative is unavailable.”

<https://eur-lex.europa.eu/legal-content/EN/TXT/PDF/?uri=CELEX:32010L0063>



Our Mission Statement

We manufacture best in class simulators that allow veterinary students to become proficient in their diagnostic and practical skills without the need to endanger or cause unnecessary discomfort to live animals. Our simulators intersect with curriculum requirements to provide maximum benefits to students and educators.

Awards & Accolades



Nominee for the 2018 Governor General's Innovation Award



VSI was voted one of ten regional winners in the 2016 Small Business Challenge sponsored by the Globe and Mail and Telus



In 2015, Alberta's Venture Magazine voted Veterinary Simulator Industries as one of Alberta's top 20 most innovative organizations



VSI was a finalist in the Calgary Chamber of Commerce Business awards in the Innovation category in September 2014.

Equine	6
Bovine	18
Ovis	34
Swine	38
Canine	40
Euthanasia Training Models	46
Replacement Parts	52
Patient Monitoring	60
Laparo	62



Equine Dystocia Simulator

With Equine Nasogastric Intubation and Neck Venipuncture w/
Intramuscular Injection

Equine Body Features:

- Modeled as a standard 15 hand Quarter Horse
- Steel reinforced epoxy/fibreglass construction with water resistant components for ease of cleaning
- 1.36m at the shoulder and 2.44m from nose to tail. Widest point is 0.8m
- Inflatable foal air bed support system
- Clear vinyl uterine bag
- Soft durable birthing perineum panel
- Replica pelvis
- Padded fetal extractor, obstetric chain, head snare and landing mat
- Comes standard in brown
- Full customer service support for installation, care and maintenance

1025586



Day One Skills & Product Benefits:

Dystocia Training:

Students will gain confidence and develop familiarity with foal positioning and palpation. 34kg (75lbs) birthing foal size

- Rectal palpation
- Durable, flexible and easy to clean skin
- Compatible with the equine uterus set for artificial insemination training upgrade kit and palpation of multi stage ovaries
- Realistic in size and aesthetically pleasing

Nasogastric Intubation and Neck Venipuncture:

The Equine Nasogastric Intubation and Neck Venipuncture/IM Injection is removable from the equine body and may be used as a standalone unit. Can be purchased separately.

- Jugular venipuncture with palpable veins that can endure multiple punctures (20 or 22 gauge needle recommended for simulation)
- Easily replaceable latex vein tubing that can endure multiple punctures; includes 5 sets of veins
- Mechanical pressurization system allows for positive pressure for blood draw
- Long lasting, easily removable, washable, replaceable hide covering with mane
- IM site that can endure multiple punctures and accept fluid injections
- Soft silicone head with flexible ears and well rendered anatomy illustrates facial injection sites and accepts a bridle
- Rolling Stand, adjustable for height, rostral tilt, and 90 degree rotation

Replaceable Parts:

- Birthing Perineum Panel
- Palpation Panel and Equine Uterus Set
- Standard Tail
- Uterine Bag
- Foal
- Veins
- Blood
- Neck Hide

Upgradeable Parts:

Artificial Insemination techniques can be practiced with the purchase of the Palpation Panel With Equine Theriogenology Uterus Set. Equine uterus set includes interchangeable ovaries.





Dystocia Foal Model

Product Features:

- Fully articulated steel skeleton, with ribcage, vertebrae, pelvis and spine
- Realistic movement; durable and flexible skin and tail
- Skull with jaw, teeth, soft palate
- Esophagus
- Palpable anus
- Reinforced ears and forelegs with durable hooves for chaining
- Realistic 34.1kg (75 lb) weight
- Standard brown
- Foal Bag for storage and transportation

1025587



► THE DYSTOCIA FOAL MODEL IS INCLUDED WITH OUR EQUINE DYSTOCIA SIMULATOR

Equine Nasogastric with Venipuncture and Intermuscular Injection Model

Technical Specifications:

- VSI metal Rolling Stand
- Durable Silicone with metal armature
- Removable head for ease of transportation, and replacement of components
- Removable/washable hide covering. Can be replaced when worn
- Comes with 5 sets of replacement veins

Product Features:

- Replica nasal passageway that simulates anatomical structure while students practice passing the intubation tube via the esophagus
- Well rendered internal anatomy will allow the student to confirm tube placement in the esophagus via a visual reference site on the left side of the neck. Students can then continue to pass the tube into the stomach chamber
- Smell and or suction test can be performed to indicate proper placement of the tube in the stomach chamber
- Lavage technique and administration of fluids can be simulated
- Jugular venipuncture with palpable veins (20-22 gauge needle recommended for simulation).
- Easily replaceable latex vein tubing that can endure multiple punctures for simulation purposes
- Mechanical vein pressurizing system allows for positive pressure for blood draw
- Intramuscular site that can endure multiple punctures and accept fluid injections
- Soft silicone head with flexible ears and well rendered anatomy enables students to locate facial injection sites. Head also accepts bit & bridle
- Rolling stand, adjustable for height, rostral tilt and 90 degree rotation

Without stand 1025593

With rolling stand 1025594

Replaceable Parts:

- Veins
- Intramuscular Pads
- Mane
- Hide Covering
- Blood
- Blood Bag
- Stomach Chamber



► NOT RECOMMENDED FOR IV CATHETERIZATION



► ARTIFICIAL INSEMINATION SIMULATION FEATURE

Equine Palpation Colic Simulator

With Equine Neck Venipuncture w/ Intramuscular Injection

Horse Body Features

- Modeled as a standard 15 hand Quarter Horse
- Steel reinforced epoxy/fibreglass construction with water resistant components for ease of cleaning
- 1.5m at the shoulder and 2.25m from nose to tail. Widest point is 0.6m
- 5 section inflatable latex GI Tract. Right and left ventral colon, right and left dorsal colon, and cecum. 3m section of small intestine with mount
- Spleen and left kidney attached with the renosplenic ligament.
- Palpable aorta capable of simulating a pulse
- Palpable soft uterus with cervix, urethra and broad ligament
- 3 sets of interchangeable ovaries; anestrus, estrus, and estrus with follicles
- Artificial Insemination
- Abdominocentesis function with replaceable pad; fluid reservoir and palpable linea
- Comes standard in black
- Artificial, removable tail
- Soft, durable perineum panel
- Replica polyurethane pelvis
- Inflatable vinyl rectum
- Recycled plastic base

With rolling stand 1025584

Without rolling stand 1025566



The Equine Neck Venipuncture/IM Injection is removable from the horse body and may be used as a stand alone unit. Can be purchased separately.

Features include:

- Jugular venipuncture with palpable veins
- Easily replaceable latex vein tubing that can endure multiple punctures; includes 5 sets of veins
- Mechanical system allows the veins to be pressurized
- Long lasting, easily removable, washable, replaceable hide covering with mane
- IM site that can endure multiple punctures and accept fluid injections
- Soft silicone head with flexible ears and well rendered anatomy illustrates facial injection sites and accepts a bridle
- Rolling Stand, adjustable for height, rostral tilt, and 90 degree rotation

Replaceable Parts:

- Abdominocentesis pad
- GI Tract
- Perineum Panel with Equine Uterus Assembly
- Ovaries
- Spleen
- Kidney
- Aorta
- Veins
- Intramuscular Pads
- Mane and Hide
- Equine Uterus
- Rectum Cuff
- ABS Ring

► PLEASE NOTE THAT CERTAIN COMPONENTS ARE NATURAL LATEX RUBBER.



Equine Neck Venipuncture & Intramuscular Injection

Product Features:

- Jugular venipuncture with palpable veins
- Easily replaceable latex vein tubing that can endure multiple punctures; includes 5 sets of veins
- Mechanical system allows the veins to be pressurized
- Long lasting, easily removable, washable, replaceable hide covering with mane
- IM site that can endure multiple punctures and accept fluid injections
- Soft silicone head with flexible ears and well rendered anatomy illustrates facial injection sites and accepts a bridle
- Rolling Stand, adjustable for height, rostral tilt, and 90 degree rotation

1025599

Replaceable Parts:

- Veins
- Intramuscular Pads
- Mane
- Hide Covering
- Blood
- Pressurized Bag

Not recommended for IV catheterization. Recommend using a smaller needle size 20-22 gauge.



Equine GI Tract

Product Features:

- Anatomically correct model
- 5 section inflatable latex GI tract with pump
- Right and left ventral colon, right and left dorsal colon, and cecum
- Section of inflatable latex small intestine included

1025575

Please note that certain components are natural latex rubber.
Care and maintenance instructions included.



Equine Radiology Limb

Right Distal Forelimb:

- Features a fully articulated skeleton
- The bone material is radiodense allowing for visualization using radiography techniques
- Allows movement at the carpus and fetlock joints
- Has a soft silicone skin for palpation
- Ability to attach the limb onto all new VSI Equine Palpation Colic Simulators that feature a removable distal limb, now standard on the full horse model
- Includes stand for clamping to a table

Without stand 1025582

With stand 1025583





Equine Theriogenology Model

Product Features:

- Rear portion of our Quarter Horse model constructed in epoxy/fiberglass
- Soft, durable perineum panel
- Inflatable vinyl rectum with pump
- Artificial, removable tail
- Polyurethane pelvis replica
- Palpable soft uterus with cervix, urethra, and broad ligament
- 3 sets of easily interchangeable ovaries; anestrus, estrus, and estrus with follicles
- Artificial Insemination

1025595

Replaceable Parts:

- Rear portion of our Quarter Horse model constructed in epoxy/fiberglass
- Soft, durable perineum panel
- Inflatable vinyl rectum with pump
- Artificial, removable tail
- Polyurethane pelvis replica
- Palpable soft uterus with cervix, urethra, and broad ligament
- 3 sets of easily interchangeable ovaries; anestrus, estrus, and estrus with follicles
- Artificial Insemination



Holstein Dystocia Simulator

Product Features:

- Modeled as a True Type Canadian Holstein Friesen
- Steel reinforced epoxy/fiberglass construction, with water resistant components throughout for ease of cleaning
- Recycled plastic base
- 1.57m at the shoulder and over 2.80m from nose to tail, 1m at widest point
- Matching Holstein Calf included
- Inflatable calf air bed support system
- Clear vinyl uterine bag
- Soft, durable perineum panel
- Soft removable tail
- Functional udder with milk tank; ability to simulate mastitic milk and can be introduced in any quadrant
- Replica polyurethane pelvis
- Padded fetal extractor, obstetric chain and head snare
- Landing mat provided to prevent damage to calf
- Dr Franks fetal extractor

1025528

Upgrade to venipuncture & epidural tail available. See pages P32-33 for details.

► ALSO COMPATIBLE WITH OUR BOVINE THERIOGENOLOGY UTERUS SET

Replaceable Parts:

- Birthing Perineum Panel
- Uterine Bag
- Tail
- Teats
- Calf
- Milk Tank
- Landing Mat
- Fetal Extractor
- Uterine Bag
- Calf Airbed



Hereford Dystocia Simulator

Product Features:

- Modeled as a True Type Canadian Hereford
- Steel reinforced epoxy/fiberglass construction, with water resistant components throughout for ease of cleaning
- Recycled plastic base
- 1.57m at the shoulder and over 2.80m from nose to tail, 1m at widest point.
- Matching Hereford Calf included
- Inflatable calf air bed support system
- Clear vinyl uterine bag
- Soft, durable perineum panel
- Soft removable tail
- Functional udder with milk tank; ability to simulate mastitic milk and can be introduced in any quadrant
- Replica polyurethane pelvis
- Padded fetal extractor, obstetric chain and head snare
- Landing mat provided to prevent damage to calf
- Dr Franks fetal extractor

1025508



Upgrade to venipuncture & epidural tail available. See page P32 for details.

Replaceable Parts:

- Birthing Perineum Panel
- Uterine Bag
- Tail
- Teats
- Calf
- Milk Tank
- Landing Mat
- Fetal Extractor
- Uterine Bag
- Calf Airbed



► ALSO COMPATIBLE WITH OUR BOVINE THERIOGEOLOGY UTERUS SET



Bovine Compact Dystocia Simulator

Product Features:

- Tabletop simulator that is modeled as a Hereford
- Epoxy/fiberglass construction, with water resistant components throughout for ease of cleaning
- 0.65m tall and 1.3 long, tail to bulkhead and 0.8m at widest point
- Available in brown or black
- Matching calf included
- Inflatable calf air bed support system
- Clear vinyl uterine bag
- Soft, durable perineum panel
- Soft removable tail
- Replica polyurethane pelvis
- Padded fetal extractor, obstetric chain and head snare
- Landing mat provided to prevent damage to calf
- Dr. Franks fetal extractor

1025506

► ALSO COMPATIBLE WITH OUR BOVINE THERIOGENOLOGY UTERUS SET

Replaceable Parts:

- Birthing Perineum Panel
- Uterine Bag
- Tail
- Calf
- Calf Airbed

Upgrade to venipuncture & epidural tail available.
See pages P32-33 for details.





Bovine Dystocia Calf Model

Product Features:

- Fully articulated steel skeleton, with ribcage, vertebrae, pelvis and spine
- Realistic movement; durable and flexible skin and tail
- Skull with jaw, teeth, soft palate
- Palpable anus
- Esophagus
- Reinforced ears and forelegs with durable hooves for chaining
- Realistic 22.7kg (50 lb) weight
- Available in 4 breeds colours: Hereford, Holstein, Black and Red Angus
- Calf Bag for storage and transport

Black Angus Dystocia Calf Model 1025511

Hereford Dystocia Calf Model 1025514

Red Angus Dystocia Calf Model 1025515

Holstein Dystocia Calf Model 1025531



► THE DYSTOCIA CALF MODEL IS INCLUDED WITH OUR HEREFORD DYSTOCIA, HOLSTEIN DYSTOCIA AND COMPACT DYSTOCIA SIMULATORS.

Holstein Venipuncture & Intramuscular Injection Model

Product Features:

Jugular Venipuncture:

- Using anatomical landmarks, students will learn to seclude and palpate veins
- Endures multiple punctures and includes 5 sets of replacement veins
- Pressurized blood bag included
- Replaceable hide covering to conceal injection sites and blood draw site

Intramuscular Injection Site:

- Well rendered anatomy illustrates injection landmarks
- Accepts fluid injections and can endure multiple punctures

Soft Silicone Head:

- Removable and replaceable ears for tagging

Rolling Stand:

- Adjustable for height, rostral tilt, 90 degree rotation
- Stand is compatible with other VSI products

With stand 1025548

Without stand 1025543



Technical Specifications:

- VSI metal Rolling Stand
- Durable Silicone with metal armature
- Removable head for ease of transportation, and replacement of components
- Removable/washable hide covering. Can be replaced when worn
- Comes with 5 sets of replacement veins

Replaceable Parts:

- Veins
- Intramuscular pads x2
- Hide covering
- Pressurized Blood bag
- VSI Blood
- Replacement Ears (L&R)





► PLEASE NOTE THAT THESE PRODUCTS ARE MADE WITH NATURAL LATEX RUBBER.

The Bovine Theriogenology Uterus Set is also sold separately and are compatible in our Dystocia Models with the purchase of the Palpation Panel Assembly.

Upgrade to venipuncture & epidural tail available. See pages P32-33 for details.

Bovine Theriogenology Model

Product Features:

- Rear portion of our Hereford model constructed in epoxy/fiberglass
- Constructed with pelvis, soft perineum palpation panel, inflatable vinyl rectum, and flexible tail
- Includes the Bovine Theriogenology Uterus Set (5):
 - Open Cow, suitable for AI training
 - Heifer, suitable for AI training
 - 45 days of pregnancy, with slightly enlarged horn and amniotic vesicle
 - 60 days of pregnancy, with uterine slip and fetus
 - 90 days of pregnancy, with uterine slip, fetus, and placentomes
- All models have representations of the cervix, broad ligament, and ovaries
- Various representations of ovaries displaying different stages of follicles and corpus luteum

1025491

Replaceable Parts:

- Palpation Perineum Panel
- Tail
- Each Uterus



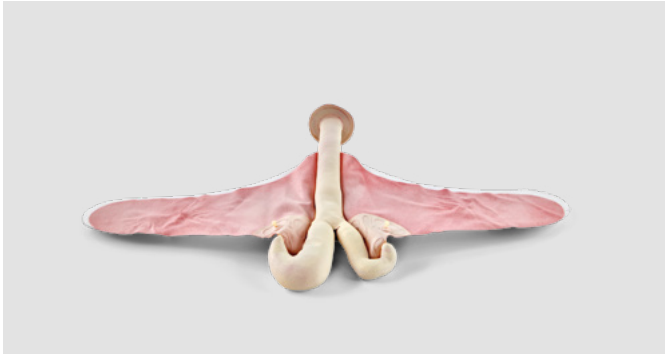
Bovine Theriogenology Uterus Set (Set of 5)

- **Open Cow**
Suitable for AI training
- **Heifer**
Suitable for AI training
- **45 Days of Pregnancy**
With slightly enlarged horn and amniotic vesicle
- **60 Days of Pregnancy**
With uterine slip and fetus
- **90 Days of Pregnancy**
With uterine slip, fetus, placentomes
- **Bovine Palpation Panel Assembly**
Enables compatibility of our Bovine
- **Bovine Ovaries Set**
All models have representations of the cervix, broad ligament, and ovaries.

1025499

- The Uterus Set includes four different representations of ovaries displaying different stages of follicles and corpus luteum.
- Each uterus sold separately does not include ovaries; they are available for purchase as a set.

*Please note that these products are made with natural latex rubber.



Bovine Venipuncture & Epidural Tail

Technical Specifications:

- Silicone tail
 - Attaches to current Bovine Dystocia and Bovine Theriogenology Model
 - Table top Stand
- Full articulation
- Venipuncture and Epidural Functions
- VSI Blood
- Hide covering
- Durable and high fidelity components
- Palpable replica bones
- Venipuncture
- Epidural
 - Vacuum draw when epidural is performed

Hereford Epidural/Venipuncture Tail – Black 1025526

Hereford Epidural/Venipuncture Tail – Brown 1025527

Holstein Epidural/Venipuncture Tail 1025536

Replaceable Parts:

- Custom VSI blood
- Replacement tubing for Epidural
- Replaceable tubing for Venipuncture
- Hide covering
- Bovine Tail stand





Bovine TB Caudal Fold Tail, Full Set

Product Features:

In our VSI Tuberculosis Caudal Fold Tail model, students can actively engage by observing and palpating the architecture of the tail fold in the Bovine model. This hands-on experience facilitates a prompt recognition of various responses to a positive TB test.

The product includes four distinct stages:

- X1 Normal
- X1 Small Firm
- X1 Diffused
- X1 Medium Firm

Each stage is available for individual purchase, with or without a stand.

1025537

Replaceable Parts:

- Normal Tail Hide
- Small Firm Tail Hide
- Diffused Tail Hide
- Medium Firm Tail Hide
- Bovine Tail
- Bovine Tail Stand

► THESE TAILS ARE COMPATIBLE WITH MOUNTING ON ALL VSI BOVINE MODELS.

- SIMULATOR COMES STANDARD WITH TWINS.
SINGLES AND TRIPLETS CAN BE PURCHASED SEPARATELY.

Southdown Ewe Dystocia Simulator

Technical Specifications:

- 2 female lambs (twins) included with purchase.
- Large or small may be purchased separately.
- approx. 89cm (35") high, 137cm (54") in length and 46cm (18") at its widest
- Steel reinforced fibreglass model, water resistant components for easy cleaning
- Removable hatch for easy access points
- Interchangeable parts for multiple simulations
- Inflatable lamb air bed support
- Vinyl uterine bag
- Soft, durable birthing perineum panel
- Flexible removable tail
- Replica pelvis
- Head snare, landing mat
- Full customer service support for installation, care and maintenance



Product Features:

- Students can practice positioning the lambs in a variety of positions to accommodate for various dystocia simulations
- Udders allow students to practice tubing and cleaning procedures
- Application of simulated ointments for treatment of infection
- Lamb positioning and palpation
- Twin articulating southdown lambs included.
- Metal skeleton allows for appropriate force and for lambs to be positioned.
- Esophagus
- Umbilicus landmark to indicate injection site
- Full natural tail for tail docking indications on Lamb
- Durable, flexible and easy to clean skin
- Compatible with the VSI Ewe Uterus Set for artificial insemination training upgrade kit
- Realistic in size and aesthetically pleasing allowing for better immersion in training scenarios

Replaceable Parts:

- Birthing Perineum Panel
- Ewe Uterus Set
- Udders
- Standard Tail
- Uterine Bag
- Lamb

Upgradeable Parts:

Artificial Insemination techniques can be practiced with the purchase of Ewe Theriogenology Uterus Set. Ewe uterus set includes interchangeable ovaries.



1025616





Dystocia Lamb

Product Features:

- Fully articulating steel skeleton, with ribcage, pelvis and spine allows for appropriate force when positioning
- Realistic movements; durable, flexible and easy to clean
- Skull, jaw, teeth and soft palate
- Umbilicus landmark to indicate injection site
- Full natural tail for tail docking indications
- Reinforced ears and durable hooves
- Available in 3 sizes: large, medium, small
- Lamb bag for storage and transportation

Large (Male) 1025618

Medium (Female) 1026066

Small (Male) 1026068

Ewe Theriogenology Model

Technical Specifications:

- Rear Section: Constructed from epoxy/ fiberglass, replicating the Southdown Ewe
- Components: Includes a pelvis, soft artificial insemination perineum panel, and flexible tail
- Ewe Theriogenology Uterus:
 - Suitable for AI training, including vaginal, cervical, and transcervical intrauterine insemination
 - Represents the cervix, broad ligament, and multi-stage ovaries
 - Made from silicone for easy cleaning
 - Displays ovaries in various stages, showing follicles and corpus luteum
- Functional udder with milk tank; ability to simulate mastitic milk and can be introduced in either udder

Udders can be tubed but will affect the life expectancy of the udders

Replaceable Parts:

- AI Perineum Panel
- Tail
- Uterus
- Ovaries
- Teats
- Milk Tank

1025604







Piglet Restraint & Blood Draw Simulator

Technical Specifications:

- Articulating steel skeleton for realistic movements
- Anatomically correct landmarks
- Injection and jugular blood draw sites
- Simulated blood source contained within body cavity for ease of use
- Made of easily cleanable high grade silicone
- Durable hooves

Restraint:

- Articulating skeleton allows students to
- practice multiple restraint positions

Injection and Blood Draw:

- Anatomically correct allowing students to expose and locate the jugular groove for injection and blood draw
- Students can identify alternate blood draw and injection sites

Replaceable Parts:

- Veins
- Blood
- Hide

1025662

Canine Basic Life Support Simulator

Product Features:

- Fully articulated steel skeleton with ribcage, and separated toes
- Representation of trachea and esophagus which allows for practical intubation training
- Representation of nasal passage to allow for nasogastric intubation training
- Representation of cephalic vein to practice venipuncture and catheterization in both front limbs
- Jugular and Saphenous vein
- Chest compression function with feedback monitor which provides feedback on speed and depth of compressions
- Representation of ear and simulated debris to practice ear cleaning techniques
- Ideal for practicing restraint and bandaging techniques
- Comes with VSI carrying bag

Replaceable Parts:

- Tongue
- Venipuncture Tubing
- Laryngopharynx Component
- Ear Capsule (Left & Right)
- Compression Monitor
- Belly Capsule
- Full body Hide Covering
- Venipuncture Fluid Bag
- Spring/Rib/Chest Piece

1025621





Canine Bandaging Limbs

Product Features:

- Represents a medium sized dog
- Features separated toes
- Durable silicone with articulated skeleton
- Solid mounting points
- Each paw has a rubber sleeve to allow for taping

1025625

1025626



Canine Dental Surgical Model

Product Features:

- Simulated teeth and bone are surrounded with soft rubber gums
- Allows for practical simulation including extraction of all teeth, probing, nerve blocks, as well as tongue, epiglottis, esophagus, and trachea to allow for intubation training
- Maxilla and mandible are easily replaced
- Clamp and arm for securing model to table is included

Canine Dental Surgical Base Model

What's included:

- Canine dental model in either brown or black
- Clamp and arm for securing to table
- Two extraction jaw sets

1025636

1026124

Canine Dental Surgical Model Package

What's included:

- Canine dental model in either brown or black
- Three replaceable extraction jaw sets
- Carrying case with custom foam inserts
- Clamp and arm for securing to table
- BONUS clear jaw set

Replaceable Parts:

- Tongue
- Larynx/Pharynx
- Mandible
- Maxilla

1025648

1026125

Canine Dental Technician Model

Product Features:

- Simulated teeth and bone are surrounded with soft rubber gums
- Allows for practical simulation including manual and ultrasonic scaling, probing, nerve blocks, as well as tongue, epiglottis, esophagus, and trachea to allow for intubation training
- Maxilla and mandible are easily replaced
- Model comes with clamp and arm

Canine Dental Technician Base Model

What's included:

- Canine dental model in either brown or black
 - 30 ml jar of artificial calculus
 - One scaling set
 - One radiodense jaw set to practice positioning techniques for radiographs
- * X-ray set has gums with periodontal ligament

1025649

1026126

Canine Dental Technician Model Package

What's included:

- Canine dental model in either brown or black
- Two replaceable scaling sets
- One replaceable x-ray set
- Carrying case with custom foam inserts
- Clamp and arm for securing to table
- BONUS clear jaw set
- 30 ml jar of artificial calculus

Jaw set consists of one mandible and one maxilla.

1025652

1026127



Canine Spay Simulator

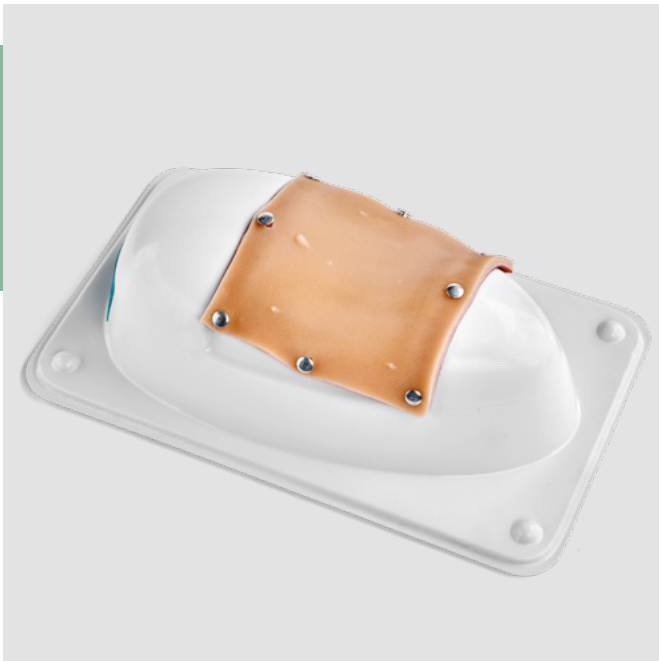
Components:

- Replaceable uterus with ovaries, broad ligament, round ligament and suspensory ligaments
- Large and small intestine with mesentery and cecum
- Spleen, kidneys and bladder
- Upper and lower thermoformed ABS plastic shell with suction cups
- Canine multi layer suture pad that features nipples and umbilicus
- Attachment pins for suture pad

1025627

► EACH CANINE SPAY UNIT INCLUDES 3 CANINE MULTI-LAYER SUTURE PADS AND 3 UTERI





Canine Uterus

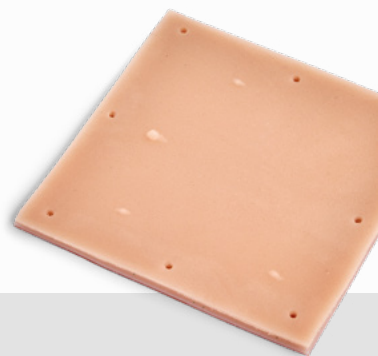
with broad & suspensory ligaments

1025633

Canine Multi-Layer Suture Pad

with nipples and umbilicus

1025668



Captive Bolt Gun Training Models

Each head includes 2 reusable silicone canisters with 4 skull / hair plates

All head models are equipped with a reusable brain canister with skull plate and hair covering. The brain is a dimensionally accurate biological representation.

The targeting brain canisters can be removed and opened to show the shot accuracy, bolt track, depth of penetration.

Holstein	1025549
Hereford	1025562
Market Steer (approx yearling 454kg (1000lbs)	1025559
Sow	1025564
Market Hog	1025553
Market Lamb	1025556
Rolling Stand to be purchased separately	



1025564



1025553



1025549



1025562



1025559



1025556

Captive Bolt Gun Training Models

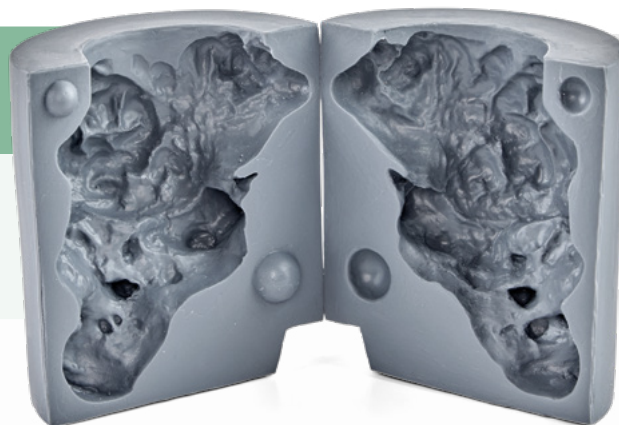
Reusable Brain Canisters

Large Reusable
Brain Canister

1025552

Hair Skull Plate
Holstein/Hereford

1025551,1025561

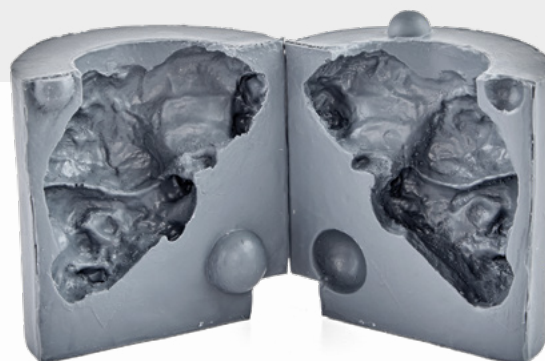


Medium Reusable
Brain Canister

1025555

Hair Skull Plate
Market Hog/Sow

1025554,1025565



Small Reusable
Brain Canister

1025557

Market Lamb
Small Skull Hair Plate

1025558





Replaceable Ears* 1025550, 1025563

* Available only on the Steer, Holstein and Hereford Bovine models.





1025656



1025658



1025660



1025655



1025657



1025659



1025653

Non-Penetrating Euthanasia Models

Non Penetrating

3 heads are included with each non penetrating bolt model

Small 3kg Piglet (neonate)	1025655
Medium 6kg Piglet	1025657
Large 9kg Piglet	1025659
Set of all 3 piglets	1025661
4kg Lamb	1025653

Replaceable Heads

Small 3kg Piglet	1025656
Medium 6 kg Piglet	1025658
Large 9kg Piglet	1025660
4kg Lamb	1025654

Full body models have feel and weight of live animals and have replaceable heads for use with non penetrating captive bolts. Used for training animal positioning and bolt placement. Each head can endure multiple shots. Each body includes 3 replaceable heads.

Bovine Replacement Parts

Hereford Birthing Panel Assembly - Black
1025509
Hereford Birthing Panel Assembly - Brown
1025510
Holstein Birthing Panel Assembly
1025529



Hereford Birthing Perineum Panel - Brown
1025520
Hereford Birthing Perineum Panel - Black
1025518
Holstein Birthing Perineum Panel
1025533



Hereford Uterine Bag
1025497
Holstein Uterine Bag
1025498



Hereford Palpation Panel Assembly - Black
1025492
Hereford Palpation Panel Assembly - Brown
1025493



Hereford Palpation Perineum Panel - Black
1025521
Hereford Palpation Perineum Panel - Brown
1025525
Holstein Palpation Perineum Panel
1025535



Bovine Inflatable Rectum
1025522



Hereford Tail - Black
1025512
Hereford Tail - Brown
1025513
Holstein Tail
1025530



Hereford Epidural/Venipuncture Tail - Black
1025526
Hereford Epidural/Venipuncture Tail - Brown
1025527
Holstein Epidural/Venipuncture Tail
1025536



Hereford Calf Air Bed Support
1025519
Holstein Calf Air Bed Support
1025532
Bovine Compact Calf Air Bed Support
1025507



Hereford Teats
1025495
Holstein Teats
1025496



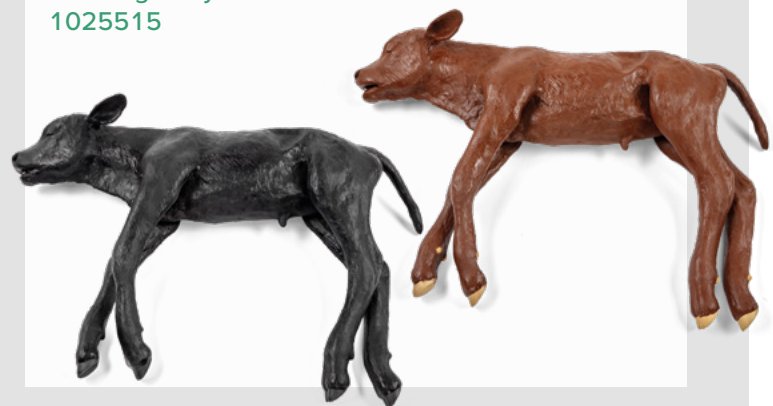
Pelvic Air Bladder
1025516
Bovine Pelvis
1025517



Hereford ABS Ring
1025524
Holstein ABS Ring
1025534



Black Angus Dystocia Calf Model
1025511
Red Angus Dystocia Calf Model
1025515



Bovine Replacement Parts

Hereford Dystocia Calf Model	1025514
Holstein Dystocia Calf Model	1025531
Bovine Theriogenology Uterus Set (Set of 5)	1025499
Bovine Theriogenology Uterus - Open Cow	1025504
Bovine Theriogenology Uterus - Heifer	1025505
Bovine Theriogenology Uterus - 45 Days of Pregnancy	1025501
Bovine Theriogenology Uterus - 60 Days of Pregnancy	1025502
Bovine Theriogenology Uterus - 90 Days of Pregnancy	1025503

1025504



1025503



Bovine Ovaries Set
1025523



Bovine Intramuscular Pads (set of 2)
1025545



Bovine Jugular Veins (set of 10)
1025546



Bovine Neck Venipuncture Hide
1025544



Neck Venipuncture Fluid
1025547



Canine Dental Model

Canine Extraction - Mandible
1025645
Canine Extraction - Maxilla
1025646



Canine Scaling/Polishing - Mandible
1025642
Canine Scaling/Polishing - Maxilla
1025643



Canine X-ray Jaw Set (Maxilla, Mandible)
1025651



Canine Clear Jaw Set (Maxilla, Mandible)
1025638



Canine 30ml Artificial Calculus
1025650



Canine Dental Laryngopharynx Component
1025641



Canine Dental Tongue
1025647



Canine Clamp/Arm
1025637



Canine Head - Black
1025639



Canine Head - Brown
1025640



Canine Spay Model

Canine Uterus
1025633



Canine Multi-Layer Suture Pad
1025668



Canine Base Plastic Shell
1025631



Canine Spleen Replacement
1025632



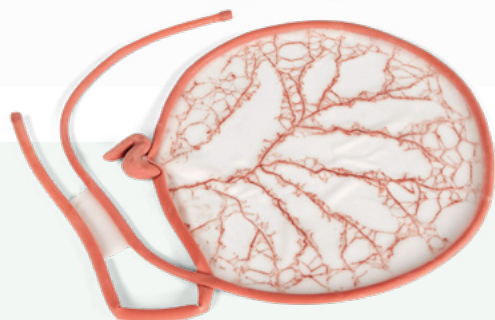
Canine Kidney Replacements (set of 2)
1025630



Canine Bladder Replacement
1025628



Canine GI Tract Replacement
1025629

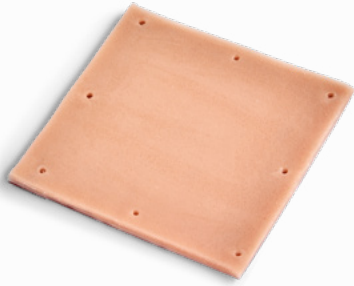


Suture Pads

Multi-Layer Suture Pad

- Consist of four (4) layers intended to represent the dermis, subcutaneous, linea and transverse fascia

1025669



Canine Multi-Layer Suture Pad

- Feature nipples and umbilicus
- Consist of four (4) layers intended to represent the dermis, subcutaneous, linea and transverse fascia

1025668



Hollow Organ Suture Pad

- Consists of one (1) layer, intended to represent a hollow organ

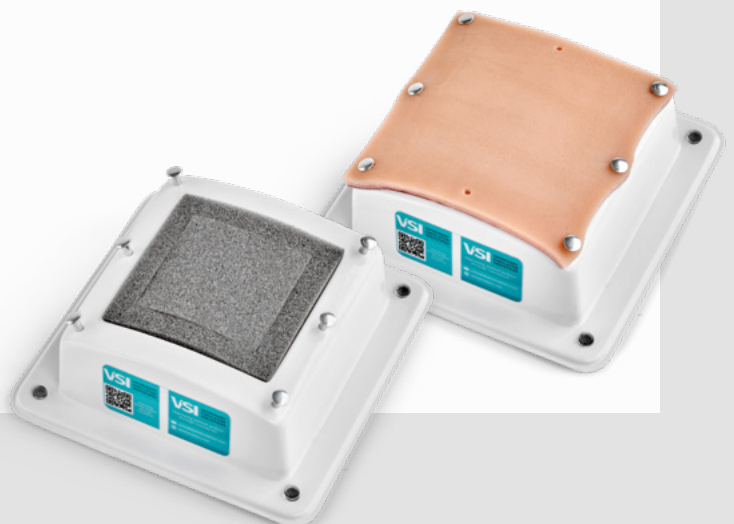
1025667



Suture Pad Base Unit

- Thermoformed ABS plastic shell with suture pad attachment pins
- Supplied with two foam inserts. Solid foam insert is for use with the multi layer suture pad. Perimeter foam insert is for use with the hollow organ suture pad. Can be stored on the inside of the base when not in use.
- Has suction cups that will adhere to smooth surfaces.

1025666





Patient Monitoring

With REALiTi 360, veterinary professionals can now simulate vital signs and monitor responses in animal-focused training, supporting high-fidelity, species-specific medical education.

In January 2020, iSimulate became an integral part of the 3B Scientific Group. Today, our primary focus centers on the continuous enhancement of our feature set and the integration of a wide range of interfaces from various devices commonly used in the medical field.

iSimulate, established in 2011, was founded with a mission to deliver efficient, dependable, and lifelike simulation tools. The innovative solution they developed has transformed healthcare simulation training on a global scale.

REALiTi 360 Ecosystem

SIMULATIONS COME TO LIFE WITH THE REALiTi 360 ECOSYSTEM:

- Mimics real defibrillators, monitors and ventilators
- Includes a built in Training Management System to access all your simulation data
- Has a built in radiology and 12 lead ECG library
- Turns any training into a high quality scenario simulation
- Enables creation of own scenarios within minutes

► THE REALiTi 360 ECOSYSTEM – SELECT YOURS TODAY – NO HIDDEN FEES

REALiTi 360 provides a realistic simulation experience with a high-fidelity generic patient monitor interface, ideal for effective in-situ training.

Simulated screens closely mimic real user interfaces and are an essential component of the REALiTi Software from the REALiTi 360 Community platform. REALiTi 360 may be used “on the fly” or by using pre-programmed scenarios. Instructors can easily add and create their own scenarios or download free scenarios from the REALiTi 360 Community platform.



REALiTi Go

Start your simulation training with the basics

Complete with 6 universal screens, instructors have a set-up to prepare course participants effectively and realistically for their assignments in the pre-hospital and hospital area.

1022862

	REALiTi Go
Item Number	1022862
Universal (Generic) Screens – Patient Monitors, Defibrillators, AEDs and Ventilators	6
Number of Premium screens included (Zoll, Philips, Schiller, etc.)	–
Optional Premium Screens to choose from	25+
Patient Monitor Tablet (included)	iPad Air 13"
Controller Tablet (included)	iPad 10.9"
1 WiFi Router	✓
1 USB Powerbank	✓
1 Simulation bag and Accessory set*	✓
ECG Waveforms – Rate Controllable	80+
ECG – Advanced Functions	✓
Static ECG – 12 Lead	✓
Live/Dynamic ECG – 12 Lead	–
SpO ₂ Waveforms	✓
CO ₂ Waveforms	✓
Invasive Blood Pressure Waveforms	✓
Critical Care Waveforms	–
Preserve CO ₂ during CPR	✓
Scenario Creation	✓
Radiology and Patient Images	✓
Laboratory Reports	✓
Training Management System	✓
CPR Feedback Module	Optional
Video Debriefing Module	Optional
Patient Chart	Optional
Remote Control Module	Optional

* Accessory set: 3 leadwires ECG cable snap, 7 leadwires ECG cable snap, 10 leads ECG trunk cable, SpO₂ sensor (Adult, Ped, Neo), NIBP cuff (Adult, Ped, Neo), Defibrillator / AED pads connector and Defibrillator Pads (Adult and Ped), Disposable adult and Pediatric ECG electrodes, EtCO₂ sensor and temperature probe.



iSimulate
A 3B SCIENTIFIC COMPANY

► EASY AND QUICK INSTALLATION!

Laparo Advance

Advance Training Station

Independent training station with integrated touch-screen and foldable stand with height and worktop adjustment. Wheels with brakes allow to move the trainer fully, worktop has cutouts to hold instruments. Comes with a fully integrated touch-screen computer, box trainer, set of 6 modules and 5 laparoscopic instruments.

1021835

Expert-Set

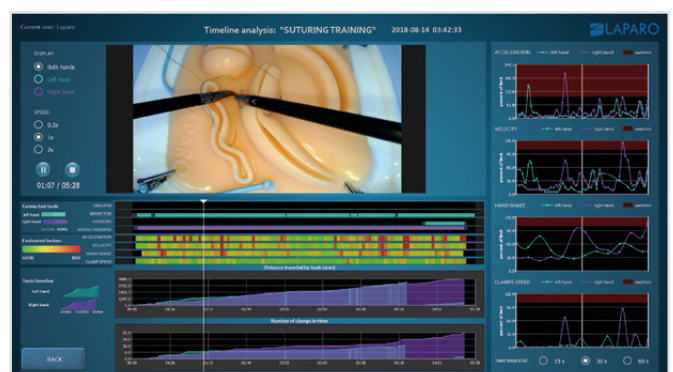
Laparoscopic trainer with built-in camera and LED light, which can be connected to any computer. Comes with a box trainer, set of 6 modules and 5 laparoscopic instruments.

1024108

Portable

Comes with a box trainer, set of 6 modules and 5 laparoscopic instruments. The set also includes a computer with an all-in-one touch screen mounted on the arm.

1023658



► CLOSE-TO-REALITY EXPERIENCE WHILE TRAINING LAPAROSCOPIC PROCEDURES ON CLINICAL INSTRUMENTS



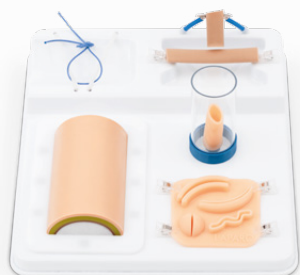
Laparo Analytic

Laparoscopic Surgical Skill Trainer with Full Training Analysis

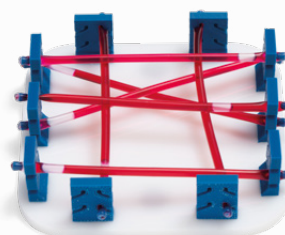
Laparo Analytic is one-of-a-kind laparoscopic trainer with an automated training analysis and progress report for the fundamental skills and techniques of laparoscopic surgery. Every student's training is saved as a video for further evaluation and the performance results are used to create individual learning curve reports.

1021836

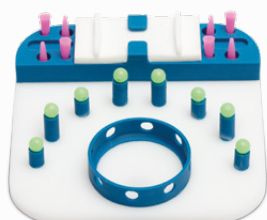
Laparo Adept Surgical Suturing Skills Set 1022970



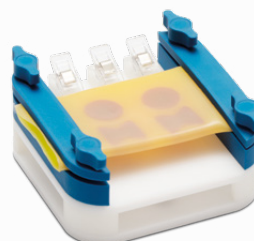
Training Module Clip Application 1023663



Dexterity Training Module 1024012



Dissection Training Module 3 in 1 1024010



► PLEASE FIND THE SOUTHDOWN EWE DYSTOCIA
SIMULATOR ON PAGE 34



► IF YOU HAVE ANY QUESTIONS OR NEED SUPPORT, PLEASE SCAN HERE



04/2025 9001428



3B Scientific Group

Headquarters · Ludwig-Erhard-Strasse 20 · 20459 Hamburg · Germany · [3bscientific.com](https://www.3bscientific.com)